

Reliability in Action

# Wheeled Loader LG938L





# Wheeled Loader LG938L



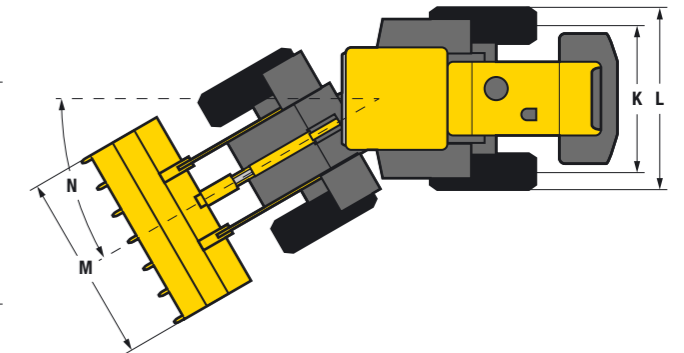
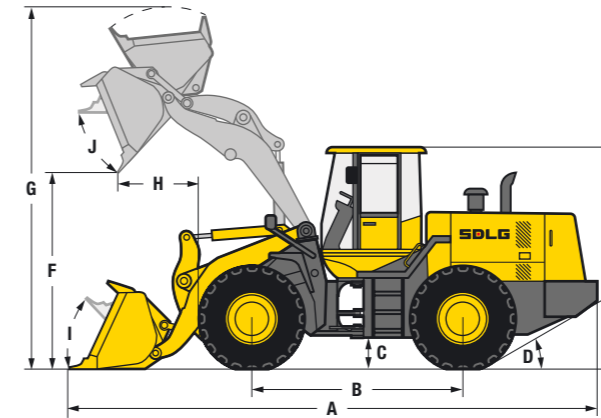
## LG938L

Powered by the Weichai Deutz engine and equipped with a smooth power shift transmission, the 10.7 tonne LG938L is an excellent utility machine. It has a robust structure and easy, comfortable single joystick operation. All SDLG wheeled loader models are rigorously tested to ensure reliability in action.

- The box structure frame of the LG938L gives best-in-class robustness.
- The access panels on the rear of the machine swing outwards to make daily checks and maintenance much easier.
- Single joystick operation of loader arm and bucket for easy and comfortable operation.

There is a wide range of attachments available for the LG938L including:

- Different size standard buckets
- Side tip bucket
- Multi-function bucket (4-in-1)
- Pallet forks
- Log grapples
- Snow blade
- Attachment bracket and associated attachments



Description	Specification
Operating weight	10 700 kg
Standard bucket capacity	1.8 m <sup>3</sup>
Lift capacity (rated load)	3 000 kg
Static tipping load at full turn	6 735 kg
Maximum breakout force	96 kN

Dimensions	
A. Overall length	7 100 mm
B. Wheel base	2 850 mm
C. Ground clearance	370 mm
D. Approach angle back	30°
E. Overall height	3 170 mm
F. Dump height	2 950 mm
G. Overall operating height	4 877 mm
H. Dump reach	1 050 mm
I. Roll back angle ground level	45°
J. Roll back level full height	62°
K. Track width	1 865 mm
L. Machine width	2 310 mm
M. Bucket width	2 510 mm
N. Steering angle	38°

Engine	
Model	Dongfeng Cummins 6BT5.9
Type	Watercooled, 4 stroke, 6 cylinders in line, direct injection, turbo charged
Rated power (SAE J1349)	97kW @ 2 200 rpm
Maximum torque	560 Nm
Cylinder bore stroke	102 / 120 mm

Description	Specification
<b>Transmission</b>	
Type	Countershaft-type, electro-hydraulic shift
Number of gears	4 forward, 3 reverse
Maximum travel speed	Forward 36 km/h Reverse 27 km/h
Drive type	4 wheel drive
Tyre dimension	17.5 - 25
Tyre pressure	Front 48 - 51 psi Rear 40 - 43 psi
Service brake type	Dry disc brake
Parking brake	Air operated internal expansion

Service fill capacities	
Fuel	140 L
Hydraulic oil	128 L
Axles (main and final drives)	2 × 18 L
Engine	17.5 L
Transmission	25 L
Brake system	4 L
<b>Hydraulics</b>	
Type	Single lever hydraulic pilot control
Boom lift time	5.3 sec
Total cycle time	9.2 sec



**SDLG machines** are built to be like the people that own them: hardworking, genuine and reliable. Cost effective, robust machines with fuel efficient engines that are easy to operate and easy to maintain.

Everything about SDLG is designed to give you the confidence that you can complete the job to a high standard and on schedule. And when you need parts or service, you can trust your SDLG dealer to deliver on our promise.

When you buy SDLG, you're buying reliability: **Reliability in Action.**



[www.sdlg.com](http://www.sdlg.com)